

## The Stoneybrook Reverse Expanded

Reverse 1.5 Story, 4 Bedrooms, 4 Full & 1 Half Bath, 3681+/- square feet  
 See Website for Pricing - [www.jamesengle.com/plans](http://www.jamesengle.com/plans)



Mediterranean Elevation



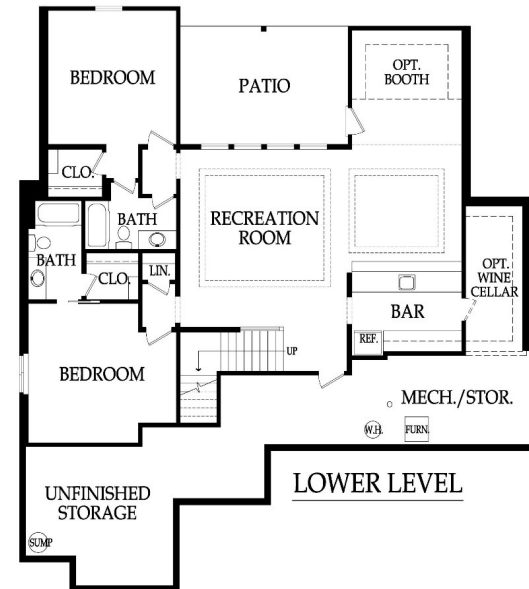
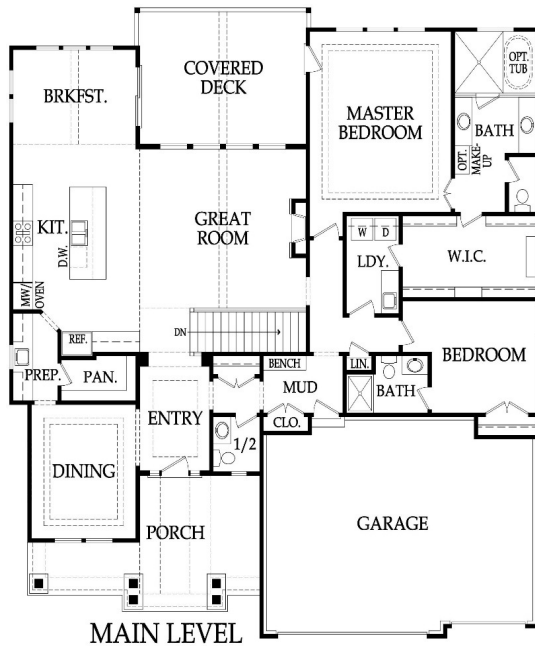
Hampton Elevation



Tuscan Elevation



Lodge Elevation



Pricing, square footage, renderings, etc are deemed reliable but not guaranteed, and are subject to change without notice. City/subdivision requirements may affect pricing. Consult Builder for details.

***The Stoneybrook Reverse Expanded***  
**STANDARD FEATURES**

**APPLIANCES**

Stainless steel appliance package allowance - dishwasher, wall oven, microwave and gas cooktop with hood vented to the exterior  
Ice maker water line at opening for Kitchen refrigerator

**CABINETS AND COUNTER TOPS**

Level 1 granite/quartz tops with std edge & std undermount sinks at Kitchen, Prep Kitchen (per plan), LL Bar (per plan) and all std Baths  
Stained custom Kitchen cabinets, raised end panels, hidden hinges, oversized crown & std hardware  
Soft-close hinges on all cabinet doors  
7/8 extension soft-close drawer guide: Kitchen, Prep Kit (per plan) & MBA; full ext Kit trash rollout  
1 upper & 1 lower enameled cabinet with laminate top at Laundry Room

**ELECTRICAL AND LOW VOLTAGE**

200 AMP service panel with breakers  
LED light bulbs in all can lights and keyless fixtures  
Indirect ceiling light tray(s) with rope lights (per plans)  
Pre-wiring for 1 wifi expansion point, up to 8 media outlets & 2 room audio (2 in-ceiling speakers & 1 volume control)  
Pre-wiring for a basic security system and 2 security cameras  
Pre-wiring & switch for ceiling fans in Great Room, Covered Patio, all Bedrooms and Office  
Weather proof exterior outlets at exterior doors (excludes door into house from garage)

**FLOORING AND TILE**

Ceramic tile floors in Master Bath, Laundry and secondary Baths  
Ceramic tile backsplash in Kitchen, Prep Kitchen (per plan) and LL Bar (per plan)  
Ceramic tile walls & floor in Master shower; ceramic tile walls (up to 7'H) in all secondary Bath tubs/showers  
Multiple pre-finished hardwood flooring options in select styles in the following areas:  
Entry, Kitchen, Breakfast, Great Room, Mud Room, Garage Hall and 1/2 Bath  
Upgraded standard carpet allowance and 6# pad

**HEATING AND AIR CONDITIONING**

18 SEER A/C with iComfort wifi thermostat, 96% efficiency single stage gas furnace & humidifier

**INSULATION, GARAGE DOORS AND OPENERS**

Energy saving air seal foam & caulk package  
R-15 blown-in wall insulation & R-49 attic insulation (excluding Garage & vaults) (may vary on elevation styles)  
Huber Zip Panel System for all exterior walls of the home  
Steel insulated garage doors (16'x8' and 8'x8')  
2 Liftmaster Premium Series #8365-267 ½hp chain drive openers, 3 remotes & 1 exterior keypad

**PLANS**

Covered deck or patio (depends on lot) and size is per plans  
Finished lower level with rec room, wet bar, 2 bed rooms, J&J bath and 1/2 bath  
30 year asphalt shingles, "Weathered Wood" in color with ice & water shield  
Approx. 9' foundation walls (not ceiling height) and 9' - 12' ceilings on main level  
Concrete foundation egress well (2 in reverse floorplans with 2 LL bedrooms)  
Fronts: James Hardie Lap siding, shake shingles, board & battens, stucco/stone accents (per plan)  
Sides & Rear: James Hardie Lap siding and trim with LP® SmartSide® Fascia and Soffit

**PLUMBING AND FIXTURES**

50 gallon gas water heater  
ORB, SS, Modern Chrome or Matte Black plumbing fixtures throughout home  
2 shower heads in Master shower and 1 comfort height elongated toilet in MBA & ½ Bath  
Jetted 42x72 tub at Master Bath with ceramic tile surround and step  
Drop-in laundry sink with chrome faucet  
Garbage disposal with air ride switch in Kitchen  
Sump pump in basement with battery backup  
Passive radon vent with 1 outlet in attic for future finish; 2 exterior hose bibs

**FIREPLACE, TRIM AND MIRRORS**

Direct vent fireplace with floor-to-ceiling faux stone and/or standard tile and wood mantle  
Boot bench in Mud Room  
Choice of black, oil rubbed bronze or brushed nickel door knobs and hinges  
Wrought iron spindles, wood end caps and square capped newel posts  
Heavy, frameless, swinging, clear glass Master shower door  
Trim wrapped mirrors at Master Bath vanities

**"MI" BRAND WINDOWS & EXTERIOR DOORS, FRONT DOOR**

White or tan vinyl windows, fixed or single hung with screens  
Argon gas filled windows with Low "E" glass  
Textured fiberglass 6'8" tall fiberglass front door with 2 direct-set clear glass sidelights (varies by elevation)

**WARRANTY AND SERVICES**

1 year James Engle Custom Homes provided warranty program  
24-hour emergency warranty service  
Quality assurance walk through occurs at 60 days and at 11 months after closing

**SITE WORK**

Landscaping Allowance of \$1,500, unless specified otherwise in C.U.P.  
Fully sodded lot with fescue sod, up to 12,000 sq. ft., unless specified otherwise in C.U.P.  
Up to 42' of 3 to 2-1/2 car wide driveway inclusive of the city approach  
Site Cost coverage – up to \$7,500 (see JECH Addendum)

**JAMES ENGLE CUSTOM HOMES ADVANTAGE PROGRAM**

HVAC ductwork professionally cleaned by a third party at closing  
Minimum of six on-site meetings with builder and homeowner  
Personal online access - download/print plot plan, floor plans, sign change orders & track costs  
Plumbing drain lines professionally inspected/cleared at closing  
Oversized 39 gallon sump pit with potential to seal in conjunction with optional radon mitigation  
Quality assurance 600-item check list reviewed with homeowner prior to closing  
Written Home Owner Manual outlining the building process, home maintenance & much more  
In-house architect customization of James Engle Custom Homes' designs  
Personalize your home when you meet with our Designer to make many of your décor selections

*Pricing, square footage, renderings, etc are deemed reliable but not guaranteed, and are subject to change without notice. City/subdivision requirements may affect pricing. Consult Builder for details.*